



ASSEMBLY GUIDE

EE0030 Handi Table

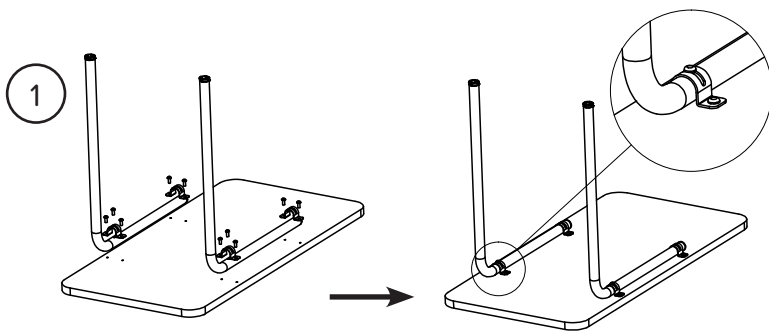


Care Quip Pty Ltd

5 Millennium Court Silverwater NSW 2128

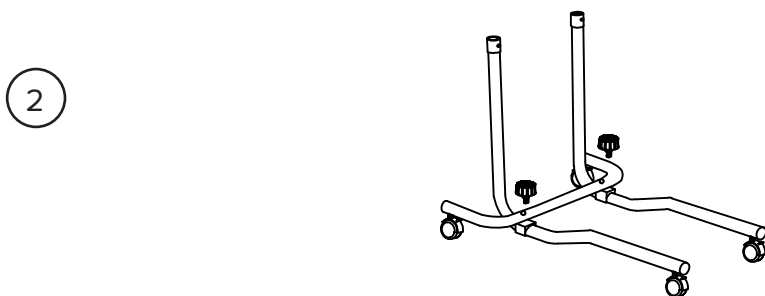
P 02 9714 1111 E info@carequip.com.au

www.carequip.com.au

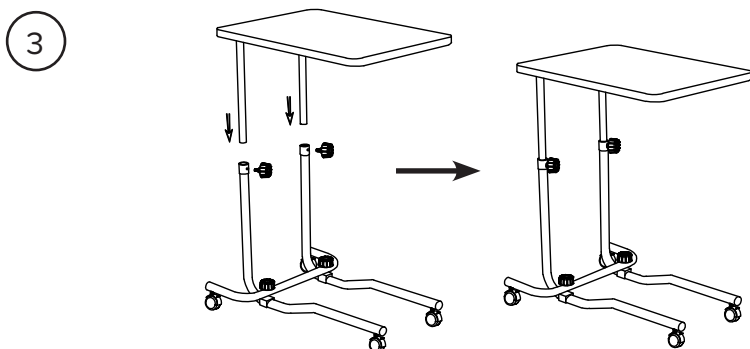


Steps:

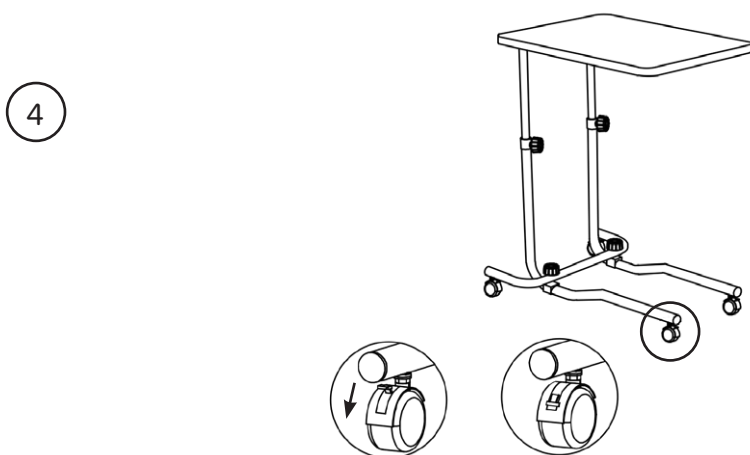
1. Insert screws with washers and tighten them



2. Tighten the support tube with handwheels



3. Insert two tubes of table into the support tube. Adjust to appropriate height and tighten the handwheels.



4. Press down lock to lock the wheels. Push up to unlock.

Safety and Maintenance:

1. Regularly check all screws and knobs
2. Regular clearing and disinfection is required
3. Store in dry ventilated place